

DEAR POSTMAN/WOMAN: Please deliver to one of the nicest people we know.



Vol. 1 10<sup>th</sup> Edition - Published by Rena Maki  
10576 N. Agate Rd, Trout Creek, Michigan 49967  
PHONE: 404-433-7983  
E-MAIL: ottawashopper@outlook.com  
www.ottawashopper.com

PRSR STD  
ECRWSS  
U.S. POSTAGE  
PAID  
EDDM Retail

POSTAL PATRON LOCAL

# OTTAWA SHOPPER *From the Heart of Ontonagon Valley*



## GOGEBIC RANGE BANK

GogebicRangeBank.com



*BIG ENOUGH TO COMPETE... SMALL ENOUGH TO CARE*

Ironwood  
906.932.7646

Bessemer  
906.663.4520

Ewen  
906.988.2821

Bergland  
906.575.1073

*This page was generously paid for by the Gogebic Range Bank.*



### SAVE the DATE

- Oct 1** *Fall Fest in Downtown Houghton, 11am-3pm: Press your own apple cider from fresh apples pumpkin patch, hot apple cider, freshly made donuts, live music and more*
- Oct 1** *Fall Color Fly-In and Drive-In and Scenic Air Rides, 9am-4pm, Ontonagon County Airport (Details inside)*
- Oct 1** *Cranberry Fest, Eagle River 9am-5pm CT*
- Oct 2** *Cranberry Fest, Eagle River 9am-3pm CT*
- Oct 7** *Check your mailbox for the next Shopper!*
- Oct 29** *Boo Crossing - Fall Festival and Haunted House, 2pm-11pm, VFW Hall in Bruce Crossing Trunk-or-Treat, Games, Pumpkin Carving Contest, Costume Contest, and more! Details to be provided in the next Shopper!*
- Nov 5** *Holiday Craft and Vendor Expo, 10am-3pm EDT, Northern Waters Casino - Watersmeet*

### WORSHIP SERVICES

- Apostolic Lutheran Church, Watton:** 11AM Sunday Worship. Holy Communion 1<sup>st</sup> Sundays. 11756 Salli Rd
- Bethany Lutheran WELS, Bruce Crossing:** Sunday Worship 5PM
- Bethany Lutheran Church (LCMC), Covington:** 10:30AM Sunday Worship. Communion 1<sup>st</sup>, 3<sup>rd</sup> Sundays, Hwy 141
- Bruce Crossing Apostolic Lutheran Church:** Sunday School 12PM, Worship 1PM. Communion 1<sup>st</sup> Sundays, Pastor Ed Hulkonen. 15121 M-28W
- Bruce Crossing Bible Church:** Sunday Worship 10AM, 15089 Maplewood Rd
- Calvary Baptist Church, Bergland:** 11AM Sunday Worship, 201 Pine St
- Calvary Temple Assembly of God, Trout Creek:** 9AM Sunday School, 10AM Sunday Worship. 187 Division St.
- ELY Memorial Church (UCC), Land O'Lakes, WI:** Service 10AM (CT) Sundays, 4302 Co. Rd. B
- First Apostolic Lutheran Church, Paynesville:** Worship 1<sup>st</sup> Sundays at 10:30AM, 3<sup>rd</sup> Sundays at 2:30PM
- First Lutheran Church (ELCA), Ewen:** Communion Worship 1<sup>st</sup>, 2<sup>nd</sup>, and 4<sup>th</sup> Sundays at 10AM. 200 N. Cedar St
- Hope Lutheran Church (LCMS), Watersmeet:** Worship 9:30 AM Sunday Worship. Communion 1<sup>st</sup>, 3<sup>rd</sup>, 5<sup>th</sup> Sundays. Pastor Gary Albert. N1764 Hwy 45
- Immaculate Conception Catholic Church, Watersmeet:** Mass 4PM (CT) Saturdays and 9:30AM (CT) Sundays, E23933 D Ave
- Our Saviour Lutheran Church (ELCA), Paynesville:** Communion Worship 3<sup>rd</sup> and 5<sup>th</sup> Sundays at 10AM. 13980 N. Paynesville Road
- Sacred Heart Catholic Church, Ewen:** 4PM Sat, 201 S Birch St.
- St. Ann's Catholic Church, Bergland:** 11AM Sunday, 480 Forest Ave.
- Trout Creek Lutheran Community Church:** Worship 11AM 3<sup>rd</sup> Sundays
- United Methodist Church, Ewen:** Worship 1st Sundays at 9AM. Open Communion. Reverend Ted Trudgeon.
- United Methodist Church, Sidnaw:** Worship 3PM Sundays. Communion 1<sup>st</sup> Sundays. Pastor Mark Miller.
- Watersmeet Bible Church:** Sunday Bible Study 9-10AM, Worship 10:30AM. Communion 1<sup>st</sup> Sunday of month. Dinner & Bible Study Wednesdays 5:30PM-7:30PM. Pastor Robert Yerks. Northwoods Quilters Tuesdays 9AM-3PM. E23640 Hwy 2
- White Pine Community United Methodist Church:** Service on Sundays at 11:00AM. Pastor Pete LeMoine. 9 Tamarack St.

**NUTRITION MEALS—Cloverland SENIOR CENTER,**  
**Ewen:** (AGE 60+ & SPOUSE) DONATION, \$4.00, GUEST FEE, \$6.50 Every Tuesday and Thursday 11AM - 1PM

**South Ontonagon County Food Pantry:** Ewen, 1<sup>st</sup> Tues ea. month, 2-4PM. 20142 State Hwy. M-28 (West side The Masons building)

**Watersmeet Food Pantry:** 1<sup>st</sup> and 3<sup>rd</sup> Tues ea. month, 10-11AM

**SUICIDE PREVENTION:** If someone you know is struggling emotionally or having a hard time, you can be the difference in getting them the help they need. To learn the signs of emotional distress or to get confidential help, call or text the new National Suicide & Crisis Lifeline by dialing or texting 988.

# LOOK WHO'S HIRING!

## NOW HIRING: FULL-TIME INSURANCE CUSTOMER SERVICE REPRESENTATIVE

Borseth Agency (Ewen office) is looking for an applicant with strong communication skills, who works in a professional manner with proficient computer skills including Microsoft Office programs. Job duties include direct customer contact, clerical duties, assist with receivables/payables, filing, and handling of confidential information in a busy office environment. We offer a competitive wage, vested pension plan, paid vacation, paid sick and personal days. Hours are M-F, 8:30AM - 4:30PM. Please send resume to:

Borseth Agency, Inc.  
PO Box 410, 101 S. Cedar Street  
Ewen, MI 49925  
Email: [info@borsethproperties.com](mailto:info@borsethproperties.com)



## EWEN-TROUT CREEK SCHOOL

### Bus Drivers Needed!

The Ewen-Trout Creek School District is looking to add bus drivers to our district.

### Don't have your CDL?

Training is available for individuals looking to jumpstart their career and obtain their Class B CDL. Please contact Tim LaBonte at 906-813-0620, ext. 240 for more information.

### CARPENTER NEEDED:

Haight Township is looking for a carpenter for needed repairs on the town hall. Contact Joe Pietila at 906-827-3800 for more info.

**APPLY TODAY:** The Onto. Co. Sheriff's Office is accepting applications for a **Full Time Correctional Officer** position. Applications due by 3:00pm on September 26, 2022. Ontonagon County is an Equal Opportunity Employer.

### Learn a new trade and become self-employed at the same time!

THE PRINT SHOP in Houghton is FOR SALE. Business is going great but owner wants to retire (started shop in 1976). Owner is ready to teach you what you need to know to take over. Engineering mind? Good with numbers? People-person? Energetic? (Owner does not need to be creative). Staff size is currently 4, 6 would be better, business has great potential for growth. [www.theprintshophoughton.com/shop-is-for-sale](http://www.theprintshophoughton.com/shop-is-for-sale) email B.J. at [artist@906print.com](mailto:artist@906print.com) with questions. Owners will not be offering seller financing.

## WE'RE HIRING!

### TRIBAL AND CASINO POSITIONS



**COOKS  
CASHIERS  
...and more!**

Offering additional \$2/hour Seasonal Differential for All Casino Positions

GREAT BENEFITS FOR  
FULLTIME EMPLOYEES  
EMPLOYEE DISCOUNTS!  
WEEKLY PAYCHECKS!

To Apply Contact Human Resources at (906) 358-4226 or go to [northernwaterscasino.com/content/careers.cfm](http://northernwaterscasino.com/content/careers.cfm)



# LVDHC

Lac Vieux Desert Health Center

N5241 US Hwy 45, Watersmeet, MI

*We work as a team and love what we do.*

## NOW HIRING

Watersmeet Location

Clinical Therapist Counselor  
Human Resource Director  
Licensed Practical Nurse  
Medical Lab Tech

If you have any questions or are interested in applying, send resume to:

LVDCH, PO Box 9, Watersmeet, MI 49969

Attention: Connie Holt

OR via email to: [cholt@lvdhealthcenter.com](mailto:cholt@lvdhealthcenter.com)

For more information visit our website:

[www.lvdhealthcenter.com](http://www.lvdhealthcenter.com)

Job descriptions are available on the LVD Health Center website, under *Contact Us > Employment*.

See *Available Positions* at bottom of page.



## LINDBERG BOUGHS

Starting October 1, 2022 from 4-6pm EST, we will collect balsam boughs on Wednesdays and Saturdays, paying 0.30cents per pound. Balsam boughs must be pencil thin, no moss, and flat.

If you have questions, call 906-827-3257.





# Pick n Save

FRESH FOR EVERYONE™

CELEBRATING  
150 YEARS!

150th ANNIVERSARY  
ROUNDY'S  
1872-2022

PicknSave.com/anniversary

MORE WAYS TO SAVE  
ON ALL THE FRESH  
YOU CRAVE



Got your phone?  
Scan this code for this  
week's hottest digital  
deals & more!

Open Daily:

6:00 AM CT - 10:00 PM CT

711 Hwy. 45 North

EAGLE RIVER, WI

(715) 479-4416

Just 40 Miles south of Bruce Crossing, MI

18 oz  
Blueberries  
**\$3.99**  
/EA  
With Card

Large  
Cooked Shrimp  
**\$7.99**  
/LB  
With Card

26-30 ct.  
Sold in Service Seafood Counter

FINAL COST  
When You Buy 4

Tostitos  
Tortilla Chips  
**\$1.99**  
/EA  
With Card

9-13 oz or Fritos, 9.25-10 oz  
or Rold Gold Pretzels, 8.75-16 oz;  
Select Varieties  
When you buy 4 or more in the same  
transaction with Card. Quantities less  
than 4 will be priced up to \$4.99  
each with Card.

Green Mountain,  
Donut Shop or  
McCafé Coffee  
**\$5.99**  
With Card

12 ct K-Cups or Swiss Miss Cocoa Mix or Café Escapes,  
10-12 ct K-Cups; Select Varieties

FINAL COST  
When You Buy 3

**3/\$14**

With Card  
Coca-Cola,  
Pepsi or 7UP

Select Varieties, 12-Pack,  
12 fl oz Cans or 8-Pack,  
12 fl oz Bottles

2 DAY SALE!

FRIDAY 9/23 - SATURDAY 9/24

**BUY 1  
GET 1 50% OFF**

of Equal or Lesser Value

With Card\*

MIX & MATCH

Halloween Jumbo Candy  
Select Varieties, 15-21.35 oz

\*Participating item selection may vary by store. Items must be purchased in the same transaction with Card. Discount applied at checkout on the item of equal or lesser value with Card.

## NIPPA EXCAVATING

GRADING  
LANDSCAPING  
LOGGING ROADS  
DOZER  
SNOW PLOWING  
SNOW REMOVAL  
SAND & GRAVEL  
TOP SOIL  
SEPTICS

25+ Years of Experience  
Licensed & Insured

906-281-0017

906-281-0644

BRUCE CROSSING, MI

**NEXT SHOPPER:  
FRI, OCT 7**

## MCMILLAN TOWNSHIP NOTICES

**VOTE**



### POLLING LOCATION CHANGE

The Polling Location for McMillan Township, Ontonagon County, has changed to the McMillan Township Office Building at 109 S. Cedar Street, Ewen, MI 49925. This is the former American Legion Building. This change is effective with the November 8, 2022, election.

For more information or questions, contact Township Clerk, Kay Richter, at 906-988-2240 or [McMillanTwp@jamadots.com](mailto:McMillanTwp@jamadots.com).

### PUBLIC REMINDER

Decorations in the Evergreen Cemetery need to be removed by **Saturday, October 15, 2022**. Any decorations remaining beyond that time will be removed by Township workers and disposed of.

### WINTER PARKING REMINDER

McMillan Township reminds all residents and visitors that Winter Parking Ordinances take effect on November 1, or with the first snowfall, whichever comes first. There is no parking on the Main Street (Cedar Street) before 7:00am Eastern Time. Vehicles must be parked a minimum of 5-6 feet off the paved (gravel or asphalt) road from 6:00am until 11:00am Eastern Time, after the county grader has plowed. Thank you for helping our workers keep our roads plowed and clear.



2<sup>nd</sup> Annual  
**FALL COLOR  
 FLY-IN AND DRIVE-IN**



20-Minute Airplane Rides by Scenic AirRides of Duluth, MN  
 \$50 adults, \$45 children -- Earlybird rides start at 9am

**Ontonagon County Airport-Schuster Field**

35932 Airport Road, Ontonagon, MI | 906-884-6214

Enjoy the beautiful fall colors as you fly  
 or drive along the shores of Lake Superior

10am - 4pm ET  
 Saturday, October 1, 2022

Lunch \$5.00! Drawings with many great prizes! Displays!



**FREE AIRPLANE RIDES** - For the first 25 youth first-time flyers ages 8-17. Rainchecks available for future rides. Sponsored by Young Eagles.



**PANCAKE BREAKFAST**

October 2, 8AM-11AM  
 Trout Creek American Legion Post 494

Pancakes, eggs, sausage, biscuits and gravy, toast, juice and coffee.  
 \$7.00 for Adults, \$3.00 for Children under 12.

Future breakfasts scheduled:  
 Oct 23 and Nov 13

**NOW ACCEPTING BIDS**

Settlers Federal Credit Union is accepting bids for painting the Interior and Exterior of the building. Bids may be submitted for *Interior only*, or *Exterior only*. Proof of liability coverage must be included with your bid. Bids are due by November 1, 2022. Envelopes must be marked "Painting Bids" and submitted to:

Settlers Federal Credit Union  
 P.O. Box 260  
 Bruce Crossing, MI 49912



Settlers Federal Credit Union reserves the right to reject any or all bids.



**"Great Rates - Better Service"**  
 Regular 10-20 Day Closings  
 24-Hour Verified Pre-Approvals  
 Available Mornings, Nights, or Weekends

**Purchase or Refinance Your Home  
 with SELECTONE Mortgage**  
 An Independent Residential Real Estate Mortgage Brokerage  
 Land O' Lakes Branch Office NOW OPEN!



*Celebrating 18 Years  
 of Quality Service!*

Dale Kleffman, Senior Loan Advisor  
 dalek@selectonemortgage.com  
 715-891-0419

www.selectonemortgage.com  
 PO Box 178 • 4259 CTH B  
 Land O' Lakes, WI 54540  
 NMLS 2093524 • Company NMLS 201542

**NOW ACCEPTING BIDS  
 FOR SNOW REMOVAL**

Settlers Federal Credit Union is looking for someone to remove snow. Bids are due by October 14, 2022.

Bids should be submitted to:

Settlers Federal Credit Union  
 P.O. Box 260  
 Bruce Crossing, MI 49912

Settlers Federal Credit Union reserves the right to reject any or all bids.

**EWEN-TROUT CREEK SCHOOL**

**Snow Removal Bids**

The Ewen-Trout Creek School District is accepting bids for snow plowing/removal for the 2022-2023 school year.

Interested parties should contact Todd Penegor at Ewen-Trout Creek School, 14312 Airport Rd, Ewen, MI 49925 or by phone 906-813-0620, ext. 378 for bid documents.

Bid deadline is 3:00pm on Friday, October 14, 2022.



Your local, one-stop shop for  
HOME IMPROVEMENT, YARD CARE,  
SPORTING GOODS & AUTOMOTIVE needs.

CALL TO SCHEDULE YOUR  
AUTO REPAIR & SERVICE:  
**(906) 827-3944**

# A&A HARDWARE and AUTO



15021 State Hwy M-28  
Bruce Crossing, MI

Open Monday—Saturday 8:30AM to 5PM, Closed Sundays

**TRAILSIDE  
BBQ & BREW**

*"Smoken' Hot Perfection"*  
**SOUTHERN STYLE BBQ  
RESTAURANT AND BREW**

Dine-In or Takeout  
**(906) 365-5227**

84 N. Highway M-28, Bergland, MI



**OPEN DAILY  
2PM—9PM**



Legal Access by UTV ONLY 3 BLOCKS from the Bergland Landing/Dock!



## WELCOME

Boaters, Fisherman, UTVs, Motorcyclists

BOAT ACCESS ● UTV ACCESS ● ONSITE GAS

**THE BEST KEPT SECRET ON LAKE GOGEBIC**



Facebook.com/rootcellarresortlakegogebic

therootcellarresort.com

### BAR & DINING

2PM-9PM  
Tuesday thru Sunday  
(906) 813-1600, Ext. 1

### LODGING

(906) 813-1600, Ext. 2

N11071 E. Shore Road  
Marenisco, MI

# UP PRODUCTS

*The Purest of Michigan*

20273 Old M28  
Ewen, Michigan

*Local, All-Natural  
Pasture-Raised*  
**BEEF & BISON MEAT**

Order today:  
**920-540-4545**



**BEEF BURGER  
PATTIES (70% lean)**  
*Great for Pub Burgers  
and Grilling!*  
10lb box

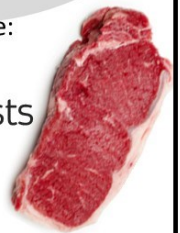
**BEEF ROLLED  
RUMP ROAST**  
3-4lb roasts

**\$5<sup>50</sup>  
/lb**

**GROUND  
BEEF (90% lean)**  
1lb & 2lb packs

Limited Supply Available:

NY Strip Steak  
Beef Chuck Roasts  
Beef Chuck Arm  
Roasts



**\$11  
/lb**

**GROUND  
BISON**  
1lb packs

ONLY **\$8<sup>00</sup>  
/lb**

When you buy  
25lbs or more!  
*(Limited time offer)*



*No Antibiotics  
No Hormones  
USDA Processed  
and Certified*



**Paul Mlasko**  
Independent Insurance Agent

# American SENIOR BENEFITS

**Kendra Williams**  
Independent Insurance Agent



Cell (586)707-2232  
mlasko.insurance@charter.net

- Medicare Supplements
- Prescription Drug Plans
- Dental/Vision/Hearing Insurance
- Under 65 Health Insurance.
- House Calls Available
- Life Insurance
- Final Expense
- Fixed Annuities

Cell (906)364-1172  
kendra.williams321@outlook.com

Licensed in MI, WI, IN, MT, AZ • Free Estimates • No Obligations • No Pressure • Office: (906) 364-7654 • 200 E. Ayer St, Suite #5, Ironwood, MI 49938

## IN LOVING Memory

**MARVIN LINNA**

Who passed away now 12 years ago,  
on September 21, 2010

Those who we love don't go away  
They walk beside us every day  
Unseen, unheard, but always near  
Still loved, still missed, and forever dear  
Your loving family.

Open 7 Days a Week  
7:30AM—9PM  
713 River St, Ontonagon, MI

### THE SQUEEZE ON MAIN

Juices and smoothies made with fresh produce and the finest ingredients  
Fresh, flavorful salads, flatbread pizzas, and more!  
Call for Hours: 906-884-6246  
401 River St, Ontonagon, MI  
CRAFT BEER - WINE - COCKTAILS  
RETAIL LOCAL PRODUCE & MEAT

## THANK YOU

The Bergland/Matchwood Historical Society wants to thank the U.S. Forest Service for the many years we were granted the use of their buildings and the benefits we received to cover the cost of utilities at the Forest Service Complex in Bergland.

Thank you to the people who trusted us with the historical items they loaned and donated to us, the public who supported us with their monetary donations, and for those coming to tour the museum. During the last few months we have had so many who have sent us donations to help raise enough money to purchase a storage building to house the historical memorabilia of Bergland.

It has been our honor to serve the area with our museum and we are sad to have to close it.

### BLACKTOP SEALCOATING

FAST  
AFFORDABLE  
NO HASSLE  
NO MESS

Covering the Western UP  
Over 20 years experience with OIL-based asphalt sealcoating

906-988-2235  
EWEN, MI  
RAM CONTRACTING  
Formerly J's Driveway

CALL BILL  
(906) 852-3565  
(906) 231-0404

Bill's Old M28 Auto Body  
150 E Old M28, Trout Creek, MI  
30+ years of experience  
3 to 5 days repair time  
Loaner car while you wait

This is the fastest way to get a collision behind you.

SERVING THE AREA FOR 35 YEARS

### PERTTU WELL SERVICE

906-827-3936  
Cell: 906-391-3927  
MICHIGAN LICENSED PUMP INSTALLER

Grundfos & Sta-rite Pumps  
WellXTrol Pressure Tanks

17150 US Highway 45 N  
Bruce Crossing, MI 49912

Like us at  
Facebook.com/perttuwellservice



# As Heard From a Little Bird

## EWEN

**Did you know** - Ewen's Economic Development Committee hosts free coffee every Monday, Wednesday, Thursday, and Friday from 7AM-1PM at the McMillan Township Offices in Ewen. Pastries are also available for a donation. Friends, Neighbors, and Visitors are all welcome to participate in this community social time.

The Annual Log Jamboree in Ewen was a big success! It was a fun weekend to catch up with familiar faces and to meet new people. The Friday craft and vendor show, quilt displays, and soup/salad luncheon were well-attended. Saturday's parade had over 80 entries. The float competition resulted in a tie for first place between the Bruce Crossing 4th of July Committee's "Boo Crossing - Oct 29" float and Big Valley Ford's "Electrified" display. Second place was the E-TC Class of '82. After catching gobs of candy, there were lots of smiles on children's faces throughout the day as they enjoyed games and winning bicycles donated by the Ewen Volunteer Fire Department. Kudos to the Ewen Civic Association for another fun community event.

## BRUCE CROSSING

Loggers Alley is looking for teams for our Saturday mixed league starting in October. Call Loggers at 906-827-9958 for info - ask for Justin or Heather. Anyone interested in men's or women's league, and new bowlers are welcome.

## TROUT CREEK

A new, free library is now open at the Interior Township Hall in Trout Creek. It's open every day, 24 hours a day in the entryway of the Hall. Take a book, leave a book, love a book, keep a book!

## SIDNAW

Get your off-road vehicle ready to roll for the Fall Fun Run hosted by Sidnaw Station on October 1. Drivers meet at 10:30am then depart at 11am. Return to Sidnaw Station at 5pm for a chili cook-off with cash prize and live music by Double Shot!

## Local Schools & Sports Tidbits

The E-TC Cross Country team began the 2022 race season at the Chequamegon Bay Golf Club on August 25, at the Oredocker Invitational. Eight E-TC kids ran their very first competitive race and they did great! Five returning runners had excellent performances as well. Junior High: Bree Besonen placed 1st out of 80 Jr High girls! Leona Schutz (16th), Aly DeCremer (20th), and McKayla Basel (25th) also placed in the top 25. Middle School girls placed 4th of 8 teams. Middle School boys: Cameron Logghe (13) and Easton Basel (25) finished in the top 25 of 58 kids. Varsity runners also ran well! Varsity girls: Emma Besonen (35 of 83), Varsity boys: Christian Besonen (56 of 101), and Rydar Sanchez (63 of 101).

The E-TC Panthers Varsity Volleyball team is off to a strong start by remaining undefeated for their first 7 games. Nice digs, bumps, sets, spikes, and consistently strong serving makes for a fine team. Best of all, coach Kaitlyn (Voight) Ruotsola (Ewen) does a terrific job of ensuring full team participation. Nice work ladies! The team is pictured on the right.

**FRONT ROW L-R:** Kally Borseth (Bruce Crossing), Kiersten Ferguson (Bergland), Emma Besonen (Ewen), Addy Avedisian (Bruce Crossing), Marissa Polkky (Bruce Crossing), Kate Borseth (Bruce Crossing), Cloe Maddox (Bruce Crossing), Madison (Perttula) Garcia (Trout Creek). **BACK ROW L-R:** Kate Borseth (Bruce Crossing), Marissa Polkky (Bruce Crossing), Alexis Maki-Gunther (Trout Creek), Cloe Maddox (Bruce Crossing), Trinity Smith (Bruce Crossing)



The Ontonagon Gladiators (combined with the E-TC Panthers) Varsity Football team has 1 win and 2 losses so far this season. They play with a lot of heart and demonstrate great teamwork combined with loads of strength and skills! You won't want to miss the last three home games of the season (home games are played in Ontonagon). Admission is \$5 for adults, \$3 for students and senior citizens. Players from E-TC include the following: Caden Besonen (Bruce Crossing), Connor Cousineau (Bergland), Chase Goll (Agate), Austin Gordon (Trout Creek), Cameron Heard (Bruce Crossing), Timmy Isabel (White Pine), Easton LeGault (Trout Creek), Daniel Lundwall (Bruce Crossing), Kegan Pietila (Bruce Crossing), Hazel Strong (Trout Creek), Redd Strong (Trout Creek), Rex Strong (Trout Creek).

## DO YOU HAVE FARMLAND OR A FARM WITH A HOUSE YOU WANT TO SELL IN THE EWEN AREA?

If you have farmland or a farm with a house in the Ewen area that you are looking to sell, want to sell, or thinking of selling...

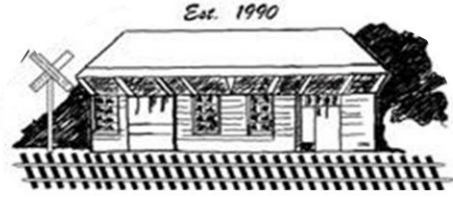
**Call or Text Pete: 616-437-7300**

# THANK YOU FOR YOUR SUPPORT!

## Our Customer Appreciation Day was an Amazing Success!

150 Perennial Plants went to new homes.  
Nancy Byrne is the winner of the Sampler Basket valued at over \$300.

## Settlers Depot Gallery



### GALLERY HOURS

Thru October 15

11am-5pm | 7 Days a Week

The Settlers Depot Gallery, staffed by local artisans, features unique creations crafted by Gallery members.

Located in Bruce Crossing, on M-28 across from the Stannard Township Fire Dept.

Seasonal schedule for the remainder of the year will be in the Ottawa Shopper and posted.

We will be open until December 3.

## STATELINE

ACCOUNTING & TAX SERVICE, LLC

Bookkeeping Individual & Business  
Payroll Income Tax Returns

Michelle M. Sparks, EA  
715-547-6212  
4366 County Rd B, Land O' Lakes, WI

EAT FRESH *Farm* STAND BUY LOCAL

Come get farm fresh veggies

23771 Old M28, Ewen, MI  
(On Old M28 between South Fair Oaks and Malnar Road)

WEDNESDAYS 4pm-6pm

Or until sold out  
JUNE 22 TO OCT 5  
Weather permitting



Follow us @motherfarmerup for weekly produce availability and other updates  
Email: info@motherfarmerup.com

## In Loving Memory of

Einard "Pert" Perttu

Who passed away 21 years ago  
September 25th, 2001

Death leaves a heartache  
no one can heal.

Love leaves a memory  
no one can steal.

Sadly Missed By His Family

## BERGLAND TOWNSHIP CEMETERY NOTICE

Please remove your flowers and other items from Bergland Township Cemeteries by October 1, 2022.

## THE PRINT SHOP

*Celebrating 46 Years in Business*

YOUR FULL-SERVICE COMMERCIAL PRINTING COMPANY SINCE 1976

NEW Online Catalogs: 906print.com

224 Shelden, Houghton • 906.482.3903

theprintshophoughton.com/shop-is-for-sale

STATE FARM® INSURANCE AGENT, IRON RIVER, MI

## Marla Shamion

Make sure you have the right coverage at the best possible price.

Call for a free quote:

906-265-5119



GET YOUR HALLOWEEN COSTUME READY FOR BOO CROSSING - OCT 29!



Your local tire experts.  
Our motto is service. Our ability is proven.

## WHITE TAIL TIRE COMPANY

Mon - Fri: 8am-5pm  
Sat: 8:30am-12pm  
Closed Sundays

HIGHWAY M-28, EWEN  
906-988-2305

## SEPTIC PUMPING & CLEANING

Do you have to dig for the lid every time you pump? In most cases, we offer an update to your existing tank with risers and a lid for your lawn surface making it easier to maintain your system.

CALL TODAY

906-827-3899



Bruce Crossing, Michigan  
primroseacres.com

WINTER IS COMING



## SHARE IT!

*Ottawa Shopper* readers provided many excellent suggestions in their responses to the August survey. Let's try a few!

### FREE STUFF/ GIVEAWAY:

A reader suggested including a "Free Stuff/Giveaway" section in each issue.

### HUNTING, FISHING & TRAPPING SUCCESS:

Share the excitement of your harvest! Was it a buck? Or a big Walleye? *Ottawa Shopper* readers would love to hear about it.

### FAVORITE RECIPES:

Do you have a special or tips for preparing a delicious meal you'd like to share? Please do so!

Send the information or details to be included in the *Ottawa Shopper* at no charge. Contact information for sharing your information is provided on the front page of this Shopper.



# LVDHC

Lac Vieux Desert Health Center

# Managing Pregnancy Back Pain Safely.

**Chiropractic Care can help.**

**Contact us today!  
P. 906.358.4588**

**N5241 US Hwy 45,  
Watersmeet, MI 49969**

**Visit us at: [lvdhc.org](http://lvdhc.org)**

**Open to  
the Public  
& Accepting  
New Patients.**

P.S., THANK YOU for your wonderful feedback and hundreds of survey responses. The survey results will be shared in the next Shopper. Stay tuned!

**We have a HUGE selection of new and pre-owned inventory!**



Riverside Ford

2625 Ludington Street  
Escanaba, MI 49829

**Sales: (906) 786-1130    Service: (877) 781-0229    Parts: (877) 733-8575**





# JOE'S AUTO SERVICE & REPAIR

3.5 miles south of Bruce Crossing at 15068 Shively Road

MAJOR CREDIT CARDS ACCEPTED



New vehicle and trailer  
**TIRE SALES & SERVICE**  
- many brands  
to choose from!

- Tune-ups
- AC/Heating
- Computer diagnostics/Check engine light
- Oil and filter changes
- Low tire pressure light repairs
- Suspension work
- Brakes
- Exhaust work

MONDAY-FRIDAY  
8:30AM to 5PM EST

**(906) 827-3800**  
CALL FOR AN APPOINTMENT

ACCEPTING WASTE OIL DURING BUSINESS HOURS

# Borseth

## Insurance & Real Estate

101 S. Cedar St.  
Ewen, MI  
(906)988-2329

544 River St.  
Ontonagon, MI  
(906)884-4161

[www.borsethproperties.com](http://www.borsethproperties.com)

### Thinking about HARVESTING YOUR FOREST LAND? Want to Improve Wildlife Habitats?

Contact...Professional Forester - Terry Read  
Phone: (906) 265-5170

## U.P. Forest Resources, Co.



129 Bernhardt Rd., Iron River, MI 49935  
Email: [upfr@hotmail.com](mailto:upfr@hotmail.com)  
[www.upforestresources.com](http://www.upforestresources.com)

## Thank You



To the Western UP and Northern Wisconsin communities, it has been my privilege to share Massage Therapy and Reiki to such a welcoming community.

Your support and trust over the past 10 years has meant the world to me. I have been fortunate to have a thriving practice for 28+ years within the states of Montana and Michigan. It is now time for me to focus on family and new adventures.

With gratitude,  
Vianna R. Myles, LMT



Pre-Planning Services  
Funeral Services  
Online Memorials  
Tribute Videos  
Funeral Fund Donations  
Sharing Service Details

200 L'Anse Ave  
L'Anse, MI 49946  
Tel: 906-524-7800

*While honoring your loved one is our top priority, we also want to help you through this difficult time.*

SHOTGUN SHOOTING: Every Wed. at 7pm ET thru end of Sept. \$5/round, Clays provided. OVSC Shooting Range, Himanka Hill Rd. in Bruce Crossing. New members welcome. Questions? Call Al Sanborn 906-827-3307

DAKA

## DOCKS-4-U

Tom Burns

Sales Service Installation  
34509 M28, Bergland, MI 49910  
906-285-9202 [burns.terry1@gmail.com](mailto:burns.terry1@gmail.com)

DAKA



## NANETTE'S KNITS AND GIFTS

- Unique Gifts
- Quality Yarns
- Alpaca Socks
- Family Crafts

Open Mon 10-2, Tues-Sat 9-5 Closed Sun  
501 Sunday Lake St., Wakefield, MI 49968  
906-364-4752 • [nanettesknitsandgifts.com](http://nanettesknitsandgifts.com)

### SEEKING LOCAL LODGING INFO:

Listings for vacation and short-term home rentals and motels/hotels in Ontonagon and Gogebic counties are needed. The *Ottawa Shopper* receives calls each week from out-of-town people who do not use the Internet. Post your rental information in the *Ottawa Shopper* for only \$10 (up to 25 words) and reach over 3,000 people. Call Rena at 404-433-7983 to submit your lodging/rental information. Or email [ottawashopper@outlook.com](mailto:ottawashopper@outlook.com).